

Atelier Africa Safaris - Limited Edition:

Namibia Fly-In Safari

Available from 2 to 12 people.



[Explore Namibia with a Private Guide, Pilot and Fully inclusive + extra unique surprises]

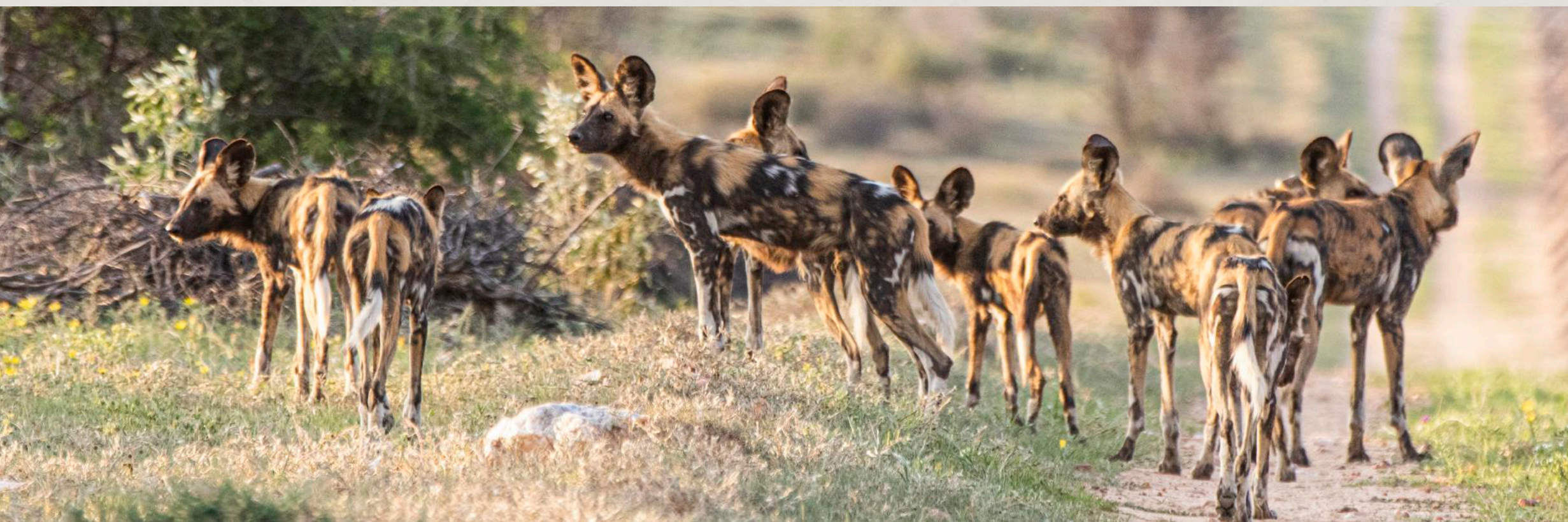


Day 1 | Welcome in Namibia

Overnight at Omaanda by Zannier - Fully incl.

On your arrival at the Windhoek International Airport. you will be welcomed by our team! From here it is only a 25 min transfer to your first accommodation in the middle of the bush. *In other words, after a long flight you'll be able to refresh and relax in less then an hour after touch-down.*

We selected the Omaanda Lodge not only for its fantastic food, service and accommodation but it is also situated on one of the best private reserves of Namibia!



<<

This afternoon we'll go out on an open 4x4 safari or "Game- Drive" to try and spot the resident Wild Dog pack, Rhino's and other amazing species that can be found here!

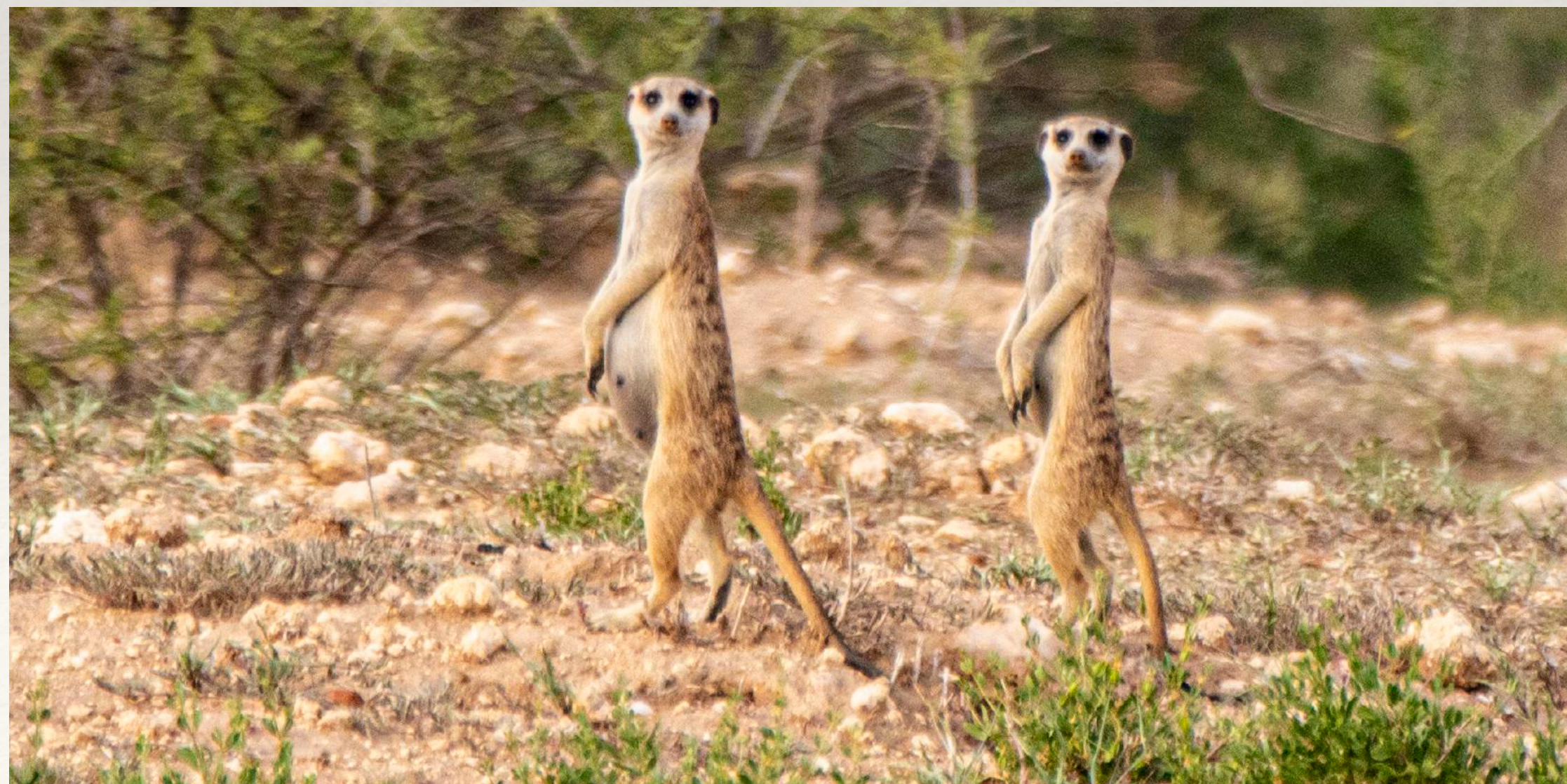
Day 2 | Safari at Omaanda*

Overnight at Omaanda Lodge by Zannier - Fully incl.

All activities included:

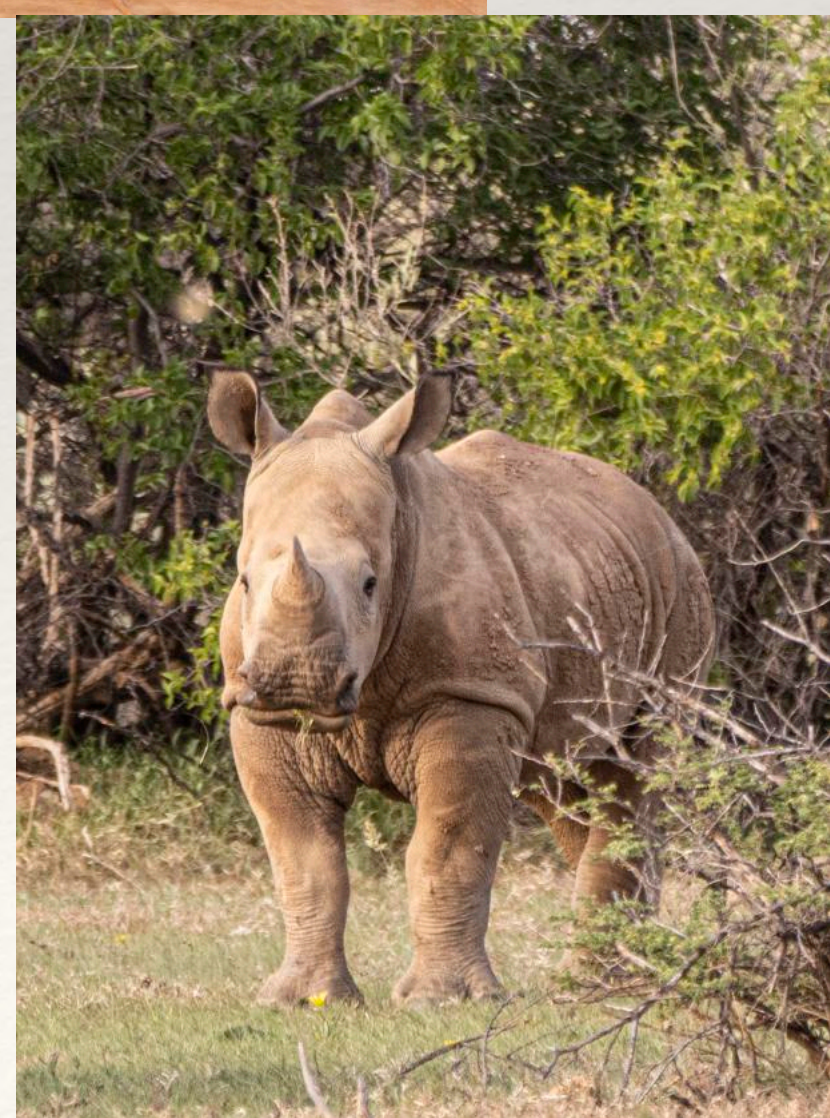
Spend the sunrise today with meerkats, such incredible early-risers creatures, and witness how they go about their morning routine – basking in the sun and foraging for food. You will be amazed by the cuteness and ingenuity of these extremely social animals.

Living in clans, these omnivore mammals follow a well-organized matriarchal structure. Meerkats hunt together, and regularly rotate duties (such as babysitting) to different members of the colony.



**Or simply relax by the pool today*

Get on your walking shoes, grab your binoculars, and go out with our trackers in search of rhinos. Rhino tracking offers a great opportunity to learn about the habits and characteristics of this threatened species, the issue of rhino poaching, and on-going conservation efforts. >>>



Day 3 | Namib Desert

This morning you'll fly from Windhoek toward the oldest desert in the world: The Namib. You will fly with a private plane straight to the lodge in less than 1 hour.

To explore this area you'll spend the next 3 nights at the **Sossusvlei Desert Lodge**.



In this spectacularly beautiful location, spacious and serene suites envelope guests in pure indulgence, complete with an outdoor pool, shower and a dramatic skylight over the bed for late night star gazing. >>

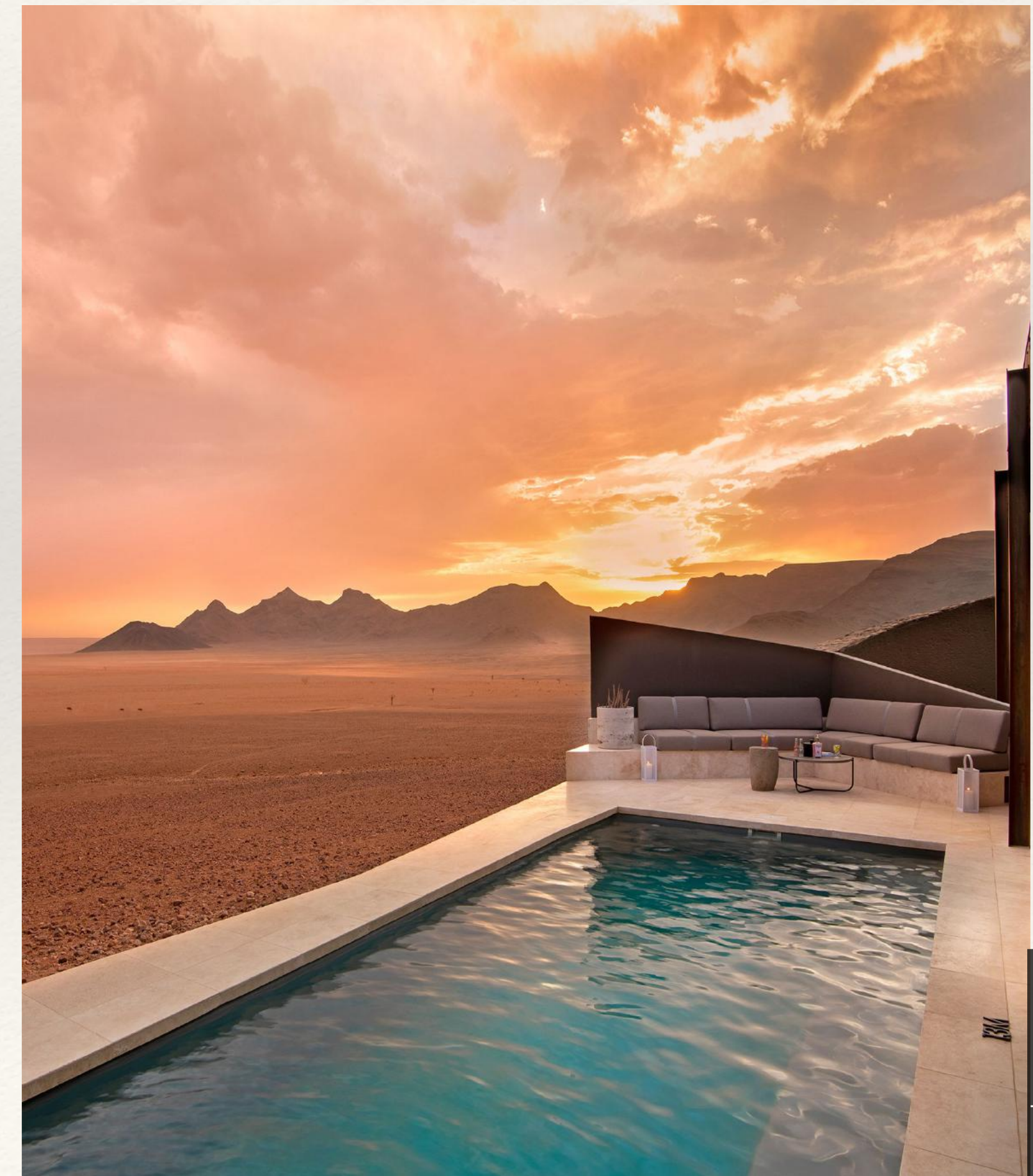
If you're up for something more active, quad bike excursions, fatbiking or nature walks will let you explore the surrounding scenery and satisfy your sense of adventure!



Overnight at Sossusvlei Desert Lodge - Fully incl.

Day 3, 4 & 5 | Sossusvlei Desert Lodge

Overnight at Sossusvlei Desert Lodge - Fully incl.



Day 4 | Visit Sossusvlei

Overnight at Sossusvlei Desert Lodge - Fully incl.

Today you have the opportunity for an excursion to **Dead Vlei** inside the **Sossusvlei**, a clay pan surrounded by some of the highest sand dunes in the world. The ever-changing kaleidoscope of scenery, colors and shades is most impressive in the first day light or late afternoon.

In the morning you will leave the lodge in a 4x4 which takes your in to this National Park.

As you drive into the park from Sesriem gate you will have 60km of tarmac road, taking you past the famous “**Dune45**” and into the Sossusvlei area, In the vlei you can climb “**Big Mama**” to enjoy a fantastic view of the dune sea and walk to Dead Vlei. On the way back to the lodge you can stop at **Sesriem Canyon**. Around mid-day your excursion in the desert will be done you return back to the lodge to relax.

For sundowners you are invited to join everyone at the patio near the restaurant where you have a stunning view over the sun setting in the orange sand dune



Day 5 | Balloon & Namib Reserve

Overnight at Sossusvlei Desert Lodge - Fully incl.

This morning you'll get to go on a hot-air balloon ride, floating over the Namib Desert at sunrise, completed with a champagne breakfast in the middle of no-where!

**Take-off at Sunrise
& experience the desert come to life!**



Your lodge is located inside the 172.000ha NAMIBRAND RESERVE

Spanning an area of 172,200 hectares and encompassing four distinct ecosystems, the Namib Rand Reserve is among the largest privately owned game parks in Southern Africa.

Founded to conserve the unique environment and wildlife species of the south-western Namib Desert, the park's mix of dunes, mountains, rocky outcrops, sandy flats and gravel plains provides habitats for a diversity of mammals – including hyenas, jackals, foxes, antelopes and various wild cats – as well as a plethora of bird species, reptiles, insects, frogs and flora.

Visitors can discover the mysterious 'fairy circles', which dot the landscape and sip on sundowners while watching the sunset over this unspoilt ancient landscape.

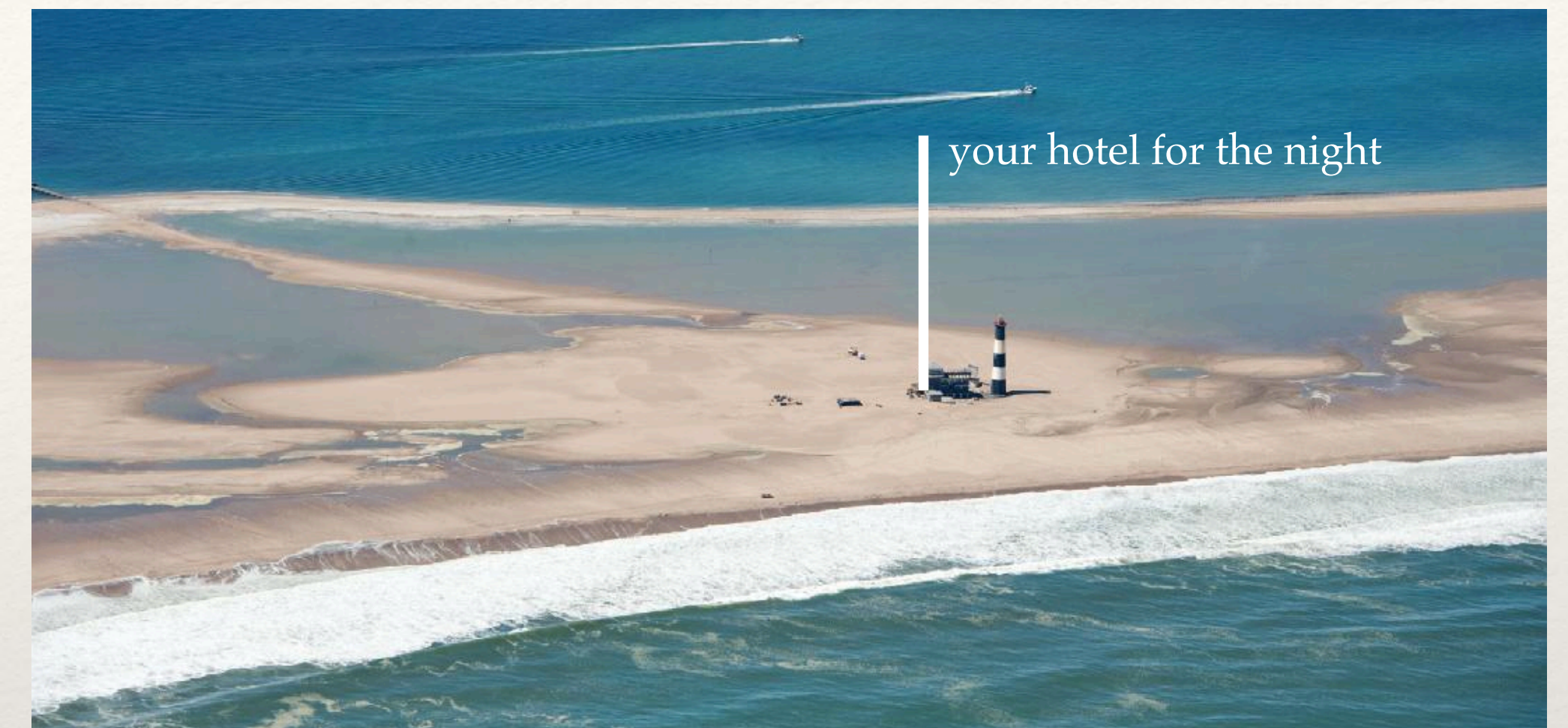
Having been named Africa's first International Dark Sky Reserve, it is one of the least light-polluted areas in the world, so don't miss this excellent star gazing opportunity >>>



Day 6 | Low flight & Skeleton Coast

Overnight at Pelican Point Lodge - Fully incl.

This morning you'll fly from the Namib Desert to the Skeleton Coast where you'll spend the afternoon exploring the dunes, and you'll overnight at the Pelican Point Lodge.



Pelican Point Lodge is situated on a unique stretch of land, the remote peninsula of Pelican Point at Walvis Bay, a committed venue to creating memories for all our guests that will last a lifetime.

With the untouched beaches of the Atlantic Ocean on the one side and the Lagoon of Walvis Bay on the other, our aim is to provide you with an unique experience that demands nothing much of you, but to arrive, relax, reflect and unwind in one of the most enchanting and unique settings in our beautiful country.

From your own private deck, expect to enjoy the antics of hundreds of seals surfing the ocean waves, or just their basking in the sun, spot the Dolphin's, Whales and Mola-Mola, hearing the distinctive call of the jackal roaming close by the lodge, observing their playful nature.

Day 7* AM | WalvisBay Boat Cruise

This morning you will sail back from Pelican Point to the mainland.



You will be brought back by BOAT to WALVISBAAI
Along the way you can see the Dolphins, etc..

Today you have time to explore the peninsula around Pelican Point, from the lodge you can also go out and Kayak between the seals (not yet included in the Quotation)

Inquisitive **seals jump between the kayaks**. This offers guests an opportunity to make contact with these **amazing sea animals**. The kayaks are **often accompanied by dolphins** and sea birds.

At Pelican Point large colonies of Cape fur Seals can be seen at a very close range, some of them might even join you on board!

Once in WalvisBay you'll fly out to Damaraland >>>



Day 7*PM | Damaraland Sorris Sorris

*From Walvis Bay Airport you'll fly straight to Damaraland.
Here we'll spend the night at Sorris Sorris Lodge - Fully incl.*

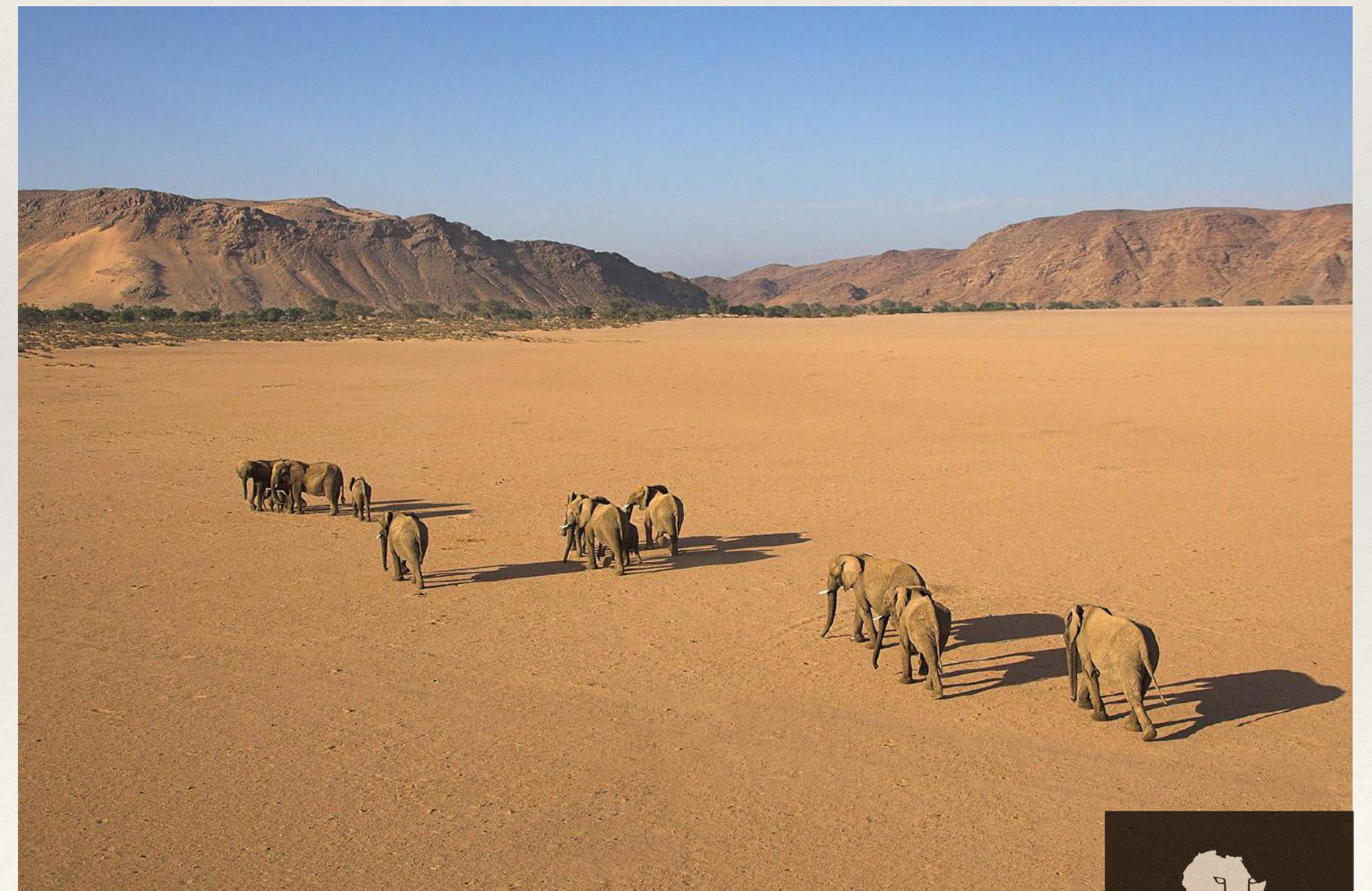


Sorris Sorris is the type of lodge, location and feel, we believe, should be part of every true African safari.

When you think about Safari it used to always be just about the Wildlife and Nature. Slowly that trend is changing and with Africa becoming a more popular destination and our lives become more rushed every day, we feel a safari now should be more than just about nature and wildlife.

Africa is one of those few places on our planet where one can truly break away from it all; experience life at a whole other level. That is what they got right when this lodge at Sorris Sorris was created.

Thanks to its very remote location and the fact that almost all other major Damaraland lodges are located over 100km north of Sorris Sorris, this place is in a league of its own. With only 9 rooms you can expect the most exquisite personal service.



Day 8 | Desert Dwelling Elephants

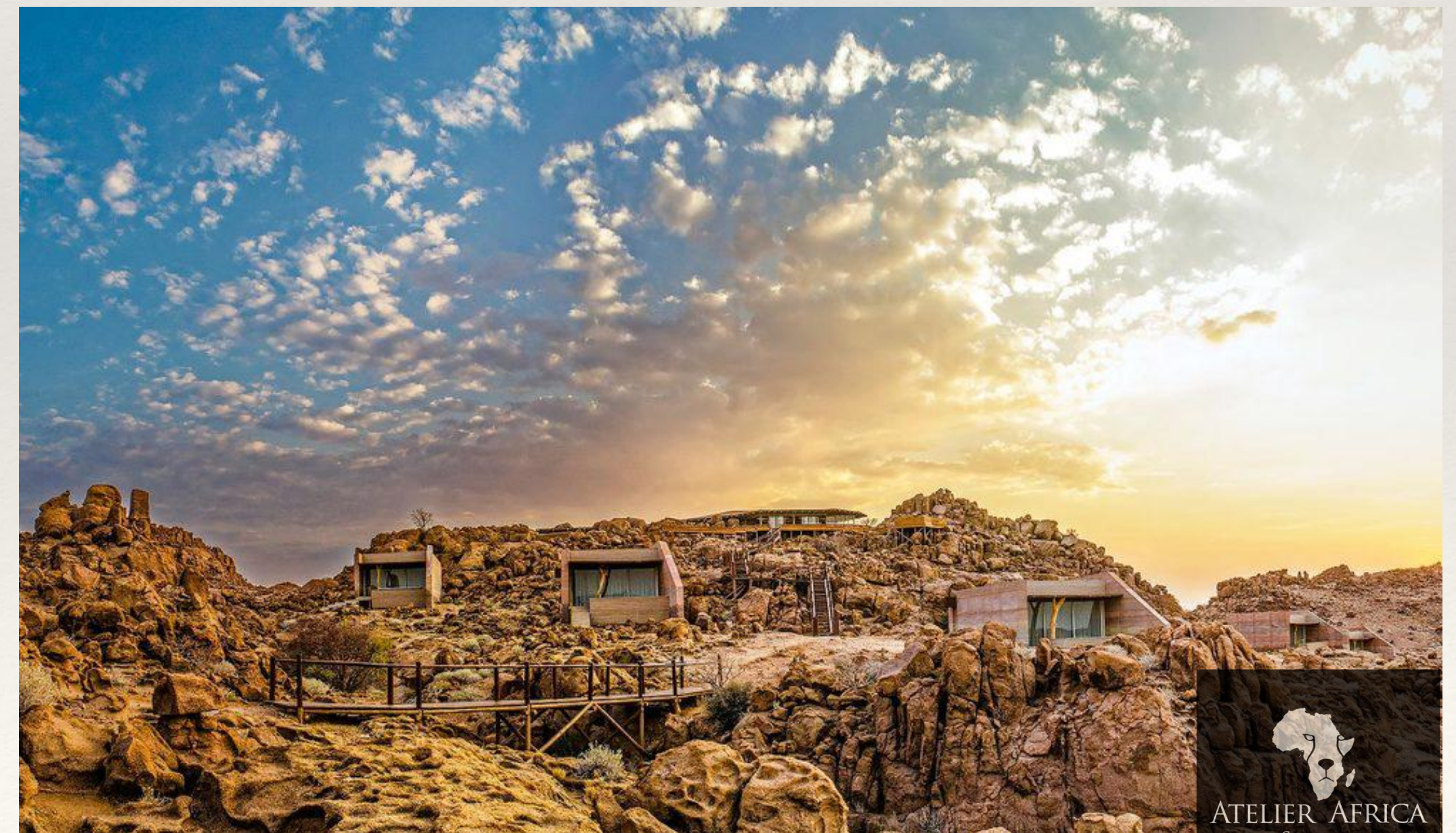
The morning we'll explore the harsh desert environment with your own guide in search for the desert dwelling elephants & other wildlife that adjusted to this amazing area.



Although not a separate species, and not much different from other savannah elephants *Loxodonta africana africana*, Namibia's desert-dwelling elephants are special nonetheless. They are of high national and international conservation priority, and have been designated as top priority for protection.

They live only in Damaraland and the Kunene Region, encompassing 115,154 km² of mostly sandy desert, rocky mountains and arid gravel plains in Namibia's northwest.

Overnight back at Sorris Sorris Lodge - Fully incl.



Day 9 & 10 | Etosha National Park

We'll fly straight over Etosha and spend the next two nights just East of the National Park at Onguma The Fort - Fully incl.



There is no park in Africa that can be compared to the Etosha Park, the salt-pan that makes out the largest part of this reserve can be seen from space and the white dust that spreads through the park creates the most amazing atmosphere.



Etosha is known to be home to some of the largest elephants in the world and around the park there are some amazing private reserves that offer top of the range accommodation combining great food, wellness and real African charm. In other words, a perfect stop for your Namibia Safari.



Day 10 | Etosha National Park

*Today we'll have a full day to explore the Etosha National Park
Overnight back at Onguma The Fort - Fully incl.*



When visiting Namibia, the Etosha National Park is a must-see.

Located on the east side of Etosha, the 20.000 ha large Onguma Private Reserve borders directly with the National Park. Inside the reserve, you'll find various lodges and camps catering for different types of travellers.

All accommodation you find at Onguma has great standards and reviews but The Fort at Onguma is one place that will make your stay memorable. Onguma The Fort has only 12 suites, each of them have been constructed almost 50 meters away from each other.



*<< to end on a high note, we plan a special
Bush Dinner as our last supper.*



*“You can leave
Africa, ...but Africa
will never leave you.”*

More on Namibia and this trip:

www.atelier-africa.com

Tel. Timo 0474 311 486

Day 11 | The End.

Today we'll have a full day still to enjoy and relax at the lodge before we fly back to Windhoek international Airport to connect with your flight home.

We look forward to welcoming you in Namibia!

Timothy & Michèle Denys

